

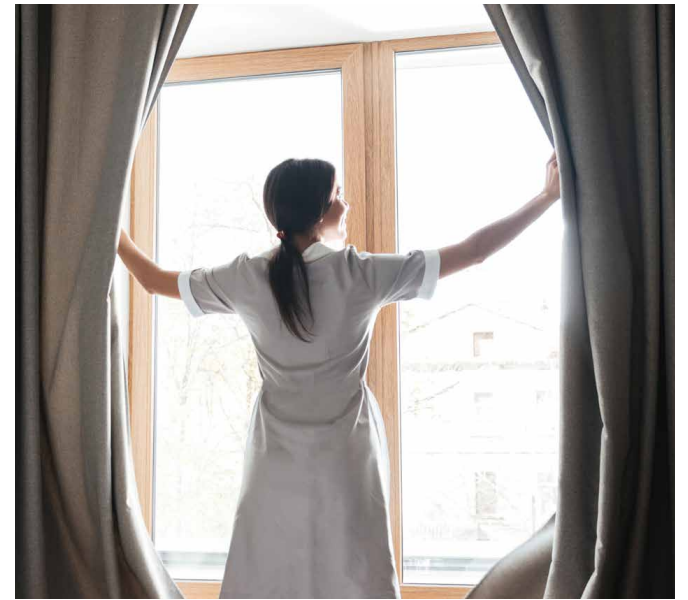


ECHO LAKE



SOLERA
SENIOR LIVING





EVERYTHING YOU WANT • EVERYTHING YOU NEED



MODERN



VISIONAR





WHAT MATTERS TO YOU?

We go where residents lead us — the lifestyle we curate, the amenities and programs we provide — everything reflects what matters most to you. Here, your requests are heard and expectations exceeded.

Creating an environment where mind, body, and spirit can flourish means having programming, amenities, and staff that are second to none. Find yourself at home and enjoy all the freedom you expect out of life while embracing all that it has to offer.





Nestled within the dynamic 'live-work-play' style community of Atwater, Echo Lake blends an upscale and energetic feel in a well-planned, bucolic setting.

SHOPPING



SO MUCH TO DO, SO CLOSE AT HAND

Every facet of our community offers picturesque views of the lake and surrounding woodland, and brings you within minutes to shopping, dining, and recreational opportunities.

Sip your morning coffee at our café, then head out on a hike, exploring the beauty of the adjacent Cedar Hollow Preserve. Spend the afternoon shopping in local boutiques, and return home to end the day with friends and drinks on the patio. In and around Echo Lake the options are endless, all without starting the car.

Should you decide to venture out — in your car or ours — you're only minutes from King of Prussia, Philadelphia, and many of Pennsylvania's most cultural, beautiful and historical locations.



A stylized, dark blue graphic of a plant with several long, thin stems and two larger, rounded, seed-like structures, positioned on the left side of the page.

LIVE EXCEPTIONAL. EVERY DAY.

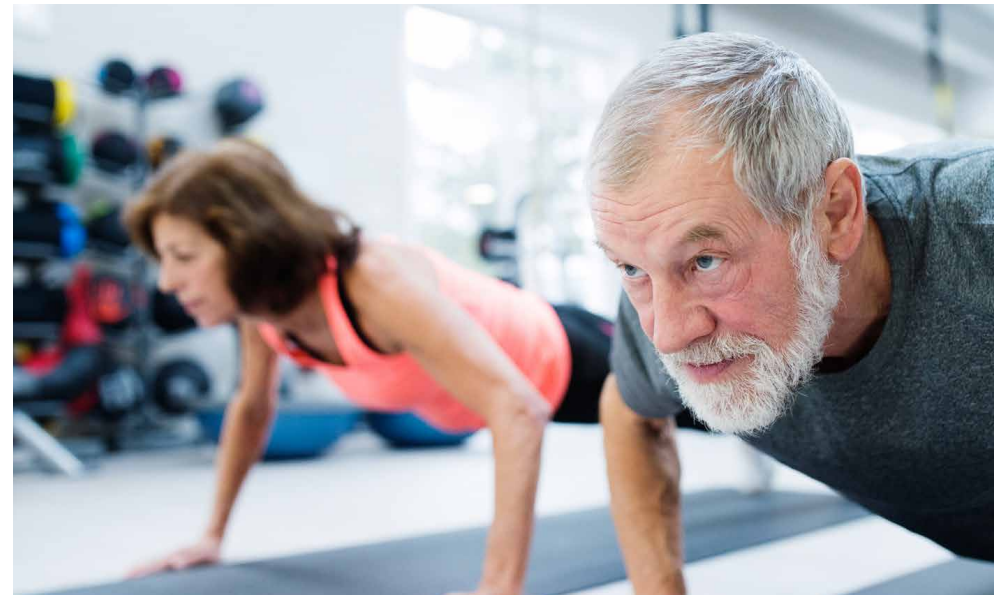
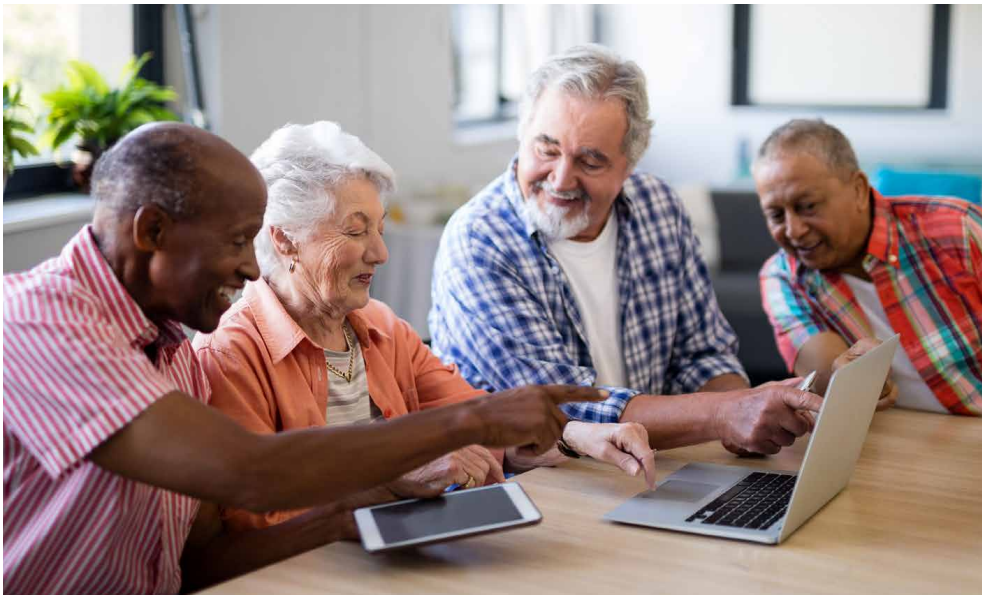
With a mosaic of programming that dares you to explore, there are boundless opportunities to pursue interests and discover exciting new ones. Our schedule has something for everyone — lectures and discussions, concerts, classes and games, parties and picnics — providing engaging opportunities every single day.

Guests are always welcome. Entertain friends in your apartment, host a family dinner one of our private dining venues, or invite the grandkids to a movie night in the auditorium. At Echo Lake, we're aimed at delighting not only our residents, but also their visitors.

Here, the living is easy and everything you want is within reach. Our unparalleled facilities, highly-trained staff, well-appointed residences, and housekeeping and maintenance that are second to none, are all designed to allow you the freedom to pursue the active lifestyle you enjoy. We take care of the details. You enjoy what matters most to you.



OUR GROUNDBREAKING RETIREMENT LIVING CONCEPT
LETS YOU CREATE A LIFESTYLE AS INDIVIDUAL AS YOU ARE



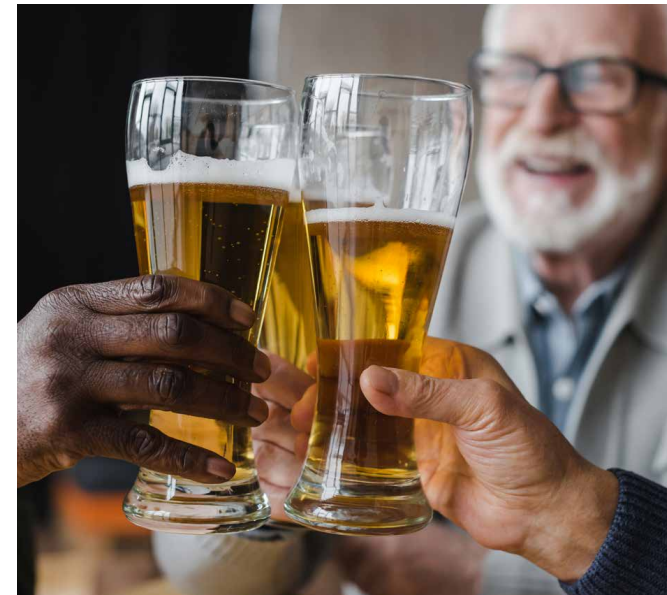
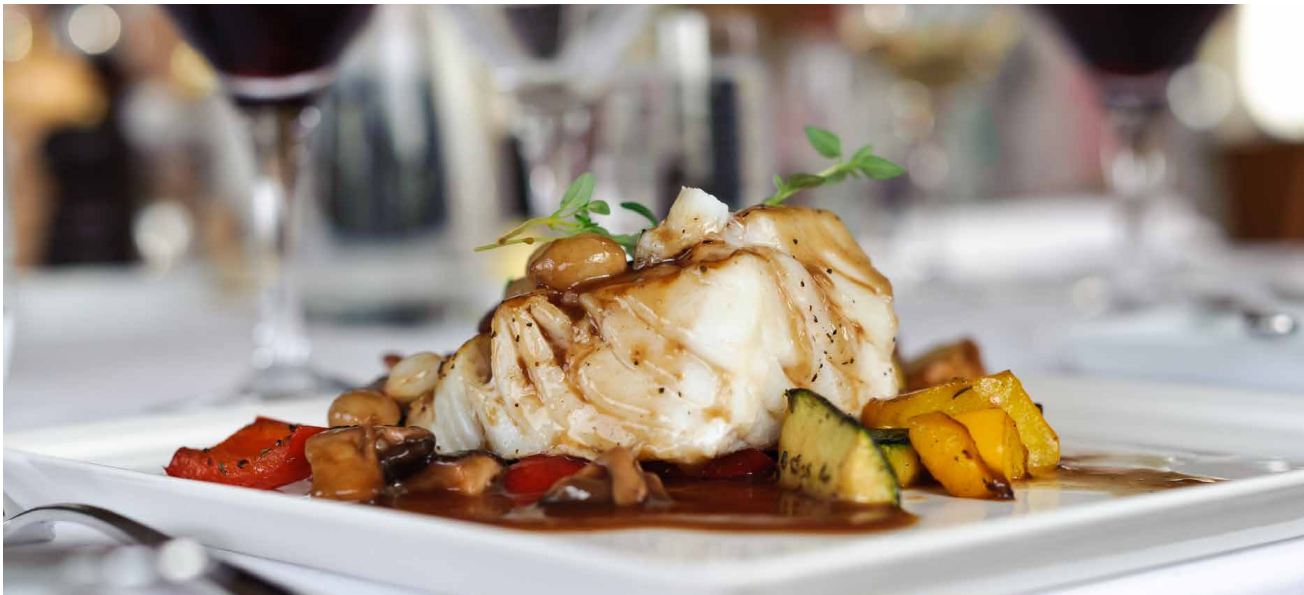


INSPIRED

DISTINCTIVE DINING

Good food is made even better when it's expertly prepared and enjoyed with family and friends. And the whole dining experience is truly enhanced when the shopping, serving, and clean up are taken care of by staff. Echo Lake offers a flexible meal plan and several dining options available throughout the day and evening to compliment your preference or palate.

Whether you're in the mood for a full-service dining experience or a casual bite to eat, you can count on seasonal and sophisticated meals built around a foundation of local, fresh, quality ingredients. Gather in the pub, café or restaurant-style dining room and indulge in the latest trends in nutrition and culinary arts.




MAKE EVERYDAY EXTRAORDINARY

At Echo Lake you can do as much, or as little as you want — it's completely up to you. Our list of services and amenities allows you to enjoy the ease of carefree living with the comfort of knowing all of your needs will be met.

- Maker spaces and club rooms are community spaces waiting for your fingerprint. We've set aside rooms to accommodate even the biggest imaginations.
- A state-of-the-art Sports Sim Lounge features the same innovative golf simulator used by top pros. You can play a round at Pebble Beach, or any of more than 100 courses, regardless of the weather forecast.
- Adjacent to Cedar Hollow Preserve, our 25-acre campus is filled with outdoor recreation opportunities: gardening plots, walking trails, Bocce, a Pickleball court, and more.
- A pub and a rooftop bar and terrace are among many spaces to gather with friends and neighbors
- Concierge and porter services provide personal assistance at your fingertips.
- Car service and scheduled transportation gets you where you want to be.
- The Glam Spa offers a relaxing retreat.
- Complimentary housekeeping and building maintenance by our own staff.
- 24/7 on-site security gives you peace-of-mind.
- Six elevators means a short walk from a space in the parking garage to your apartment door.





With resort-style amenities, maintenance-free living and devoted staff to make sure you're well taken care of, your new home will feel like a vacation that just keeps getting better.

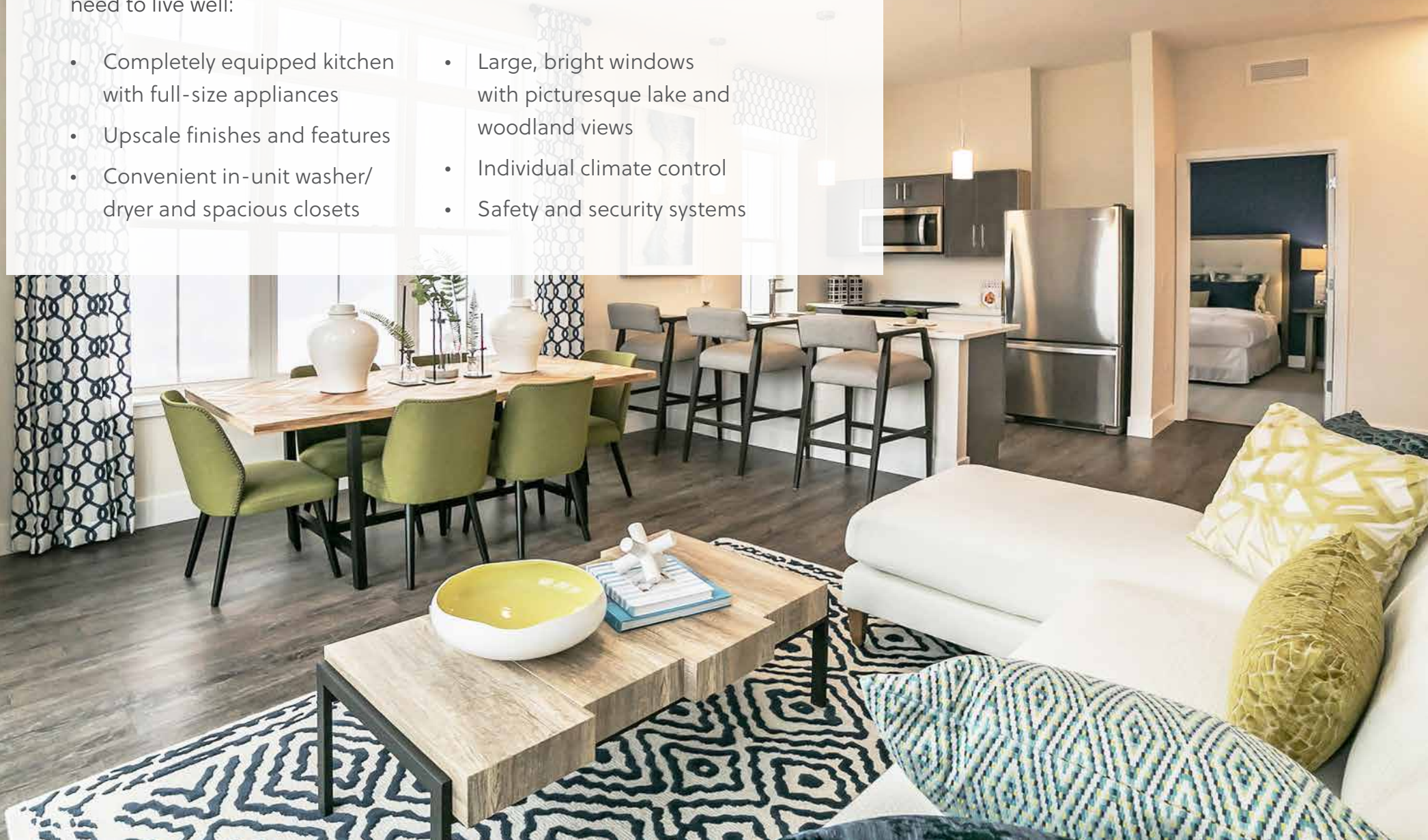
ELLEGANT

REFINED RESIDENCES

Thoughtfully designed for modern living, our spacious apartments provide a perfect backdrop for your individual taste and lifestyle.

Accessible and expertly planned, each residence includes everything you need to live well:

- Completely equipped kitchen with full-size appliances
- Upscale finishes and features
- Convenient in-unit washer/dryer and spacious closets
- Large, bright windows with picturesque lake and woodland views
- Individual climate control
- Safety and security systems





TWO BEDROOM APARTMENT

1,188 Square Feet

2 Bed • 2 Bath

A variety of apartment floor plans are offered: studio, alcove, one-bedroom, one-bedroom with den, and two-bedroom.

BETTER HEALTH THROUGH LIVING

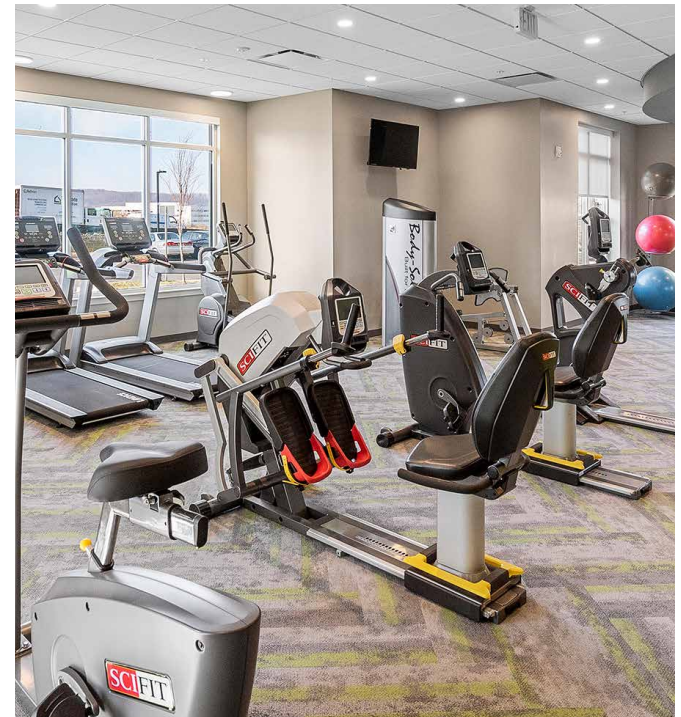
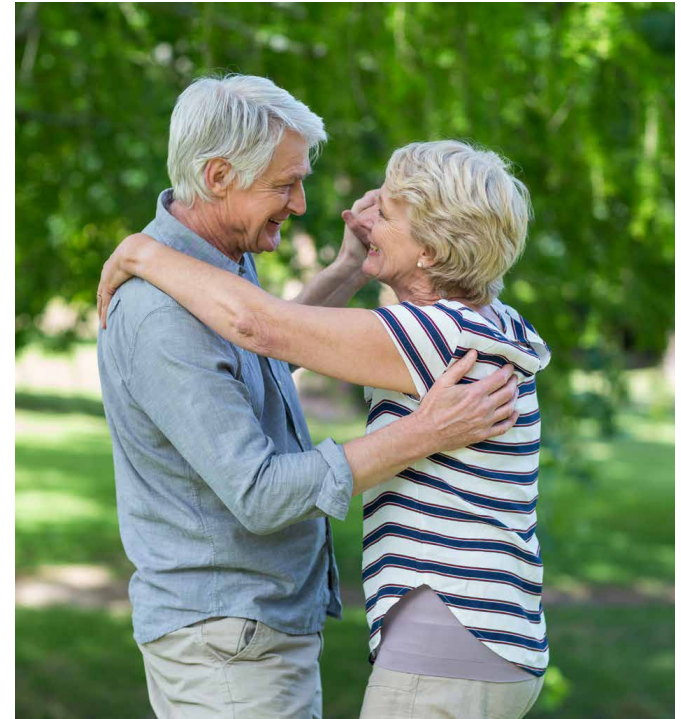
WELLNESS PROGRAMS

We know from experience and research that purposeful movement is essential to good health, so we help you keep your wellness goals in sight. With a multitude of fitness opportunities that accommodate all interests and abilities, maintaining and improving mobility and fitness has never been easier or more fun.

SUPPORTIVE CARE

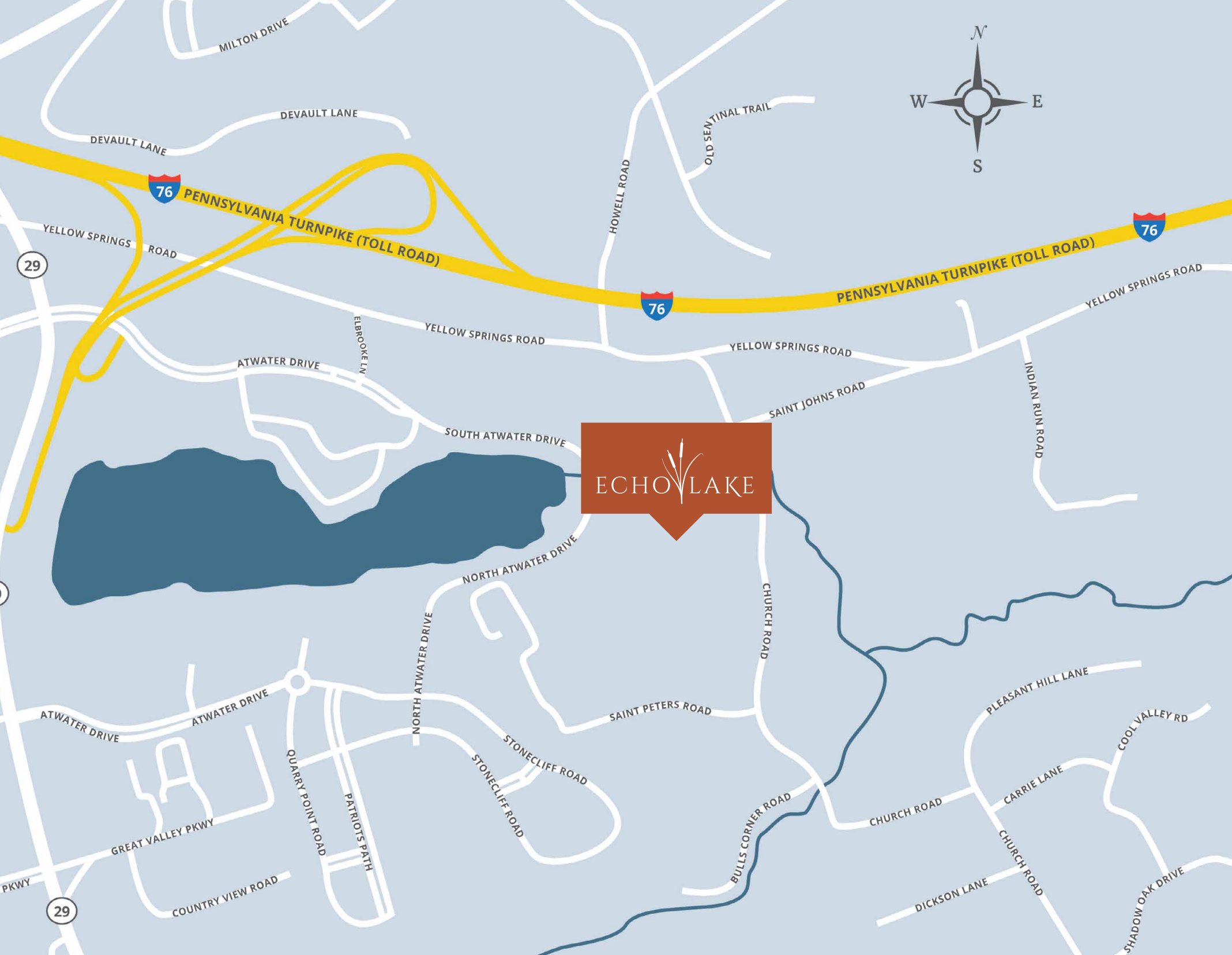
Living life on your own terms shouldn't stop when you need care. Our assisted living and Connections memory care programs are designed to meet your needs for aging in place. You can feel secure knowing that, should your needs change, your community doesn't have to.

At the leading edge of the 'aging well' movement, Echo Lake is centered around a 4,500 sq. ft., state-of-the-art fitness and wellness center offering everything you need to feel your best.





HEALTHY



76

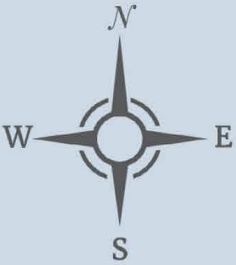
PENNSYLVANIA TURNPIKE (TOLL ROAD)

76

PENNSYLVANIA TURNPIKE (TOLL ROAD)

29

ECHO LAKE



29



Echo Lake

Live Distinctively. Every Day.

"I am proud that Echo Lake is somewhere that you or a loved one would want to live. The community is ideal if you are want to continue to maintain your independence while enjoying an active and engaging lifestyle and high-quality services delivered by attentive and caring staff.

We are excited for you to experience the difference."

ADAM KAPLAN | FOUNDER AND CEO, SOLERA SENIOR LIVING

**FIND YOUR
NEW HOME AT
ECHO LAKE**



ECHO LAKE

900 North Atwater Drive • Malvern, Pennsylvania • 19355

484-568-4777

LivingAtEchoLake.com

SOLERA
SENIOR LIVING

